

An Overview of Poverty, Race, and Jurisdiction in Metropolitan Richmond

John V. Moeser

2008 Poverty Thresholds

U.S. Bureau of the Census

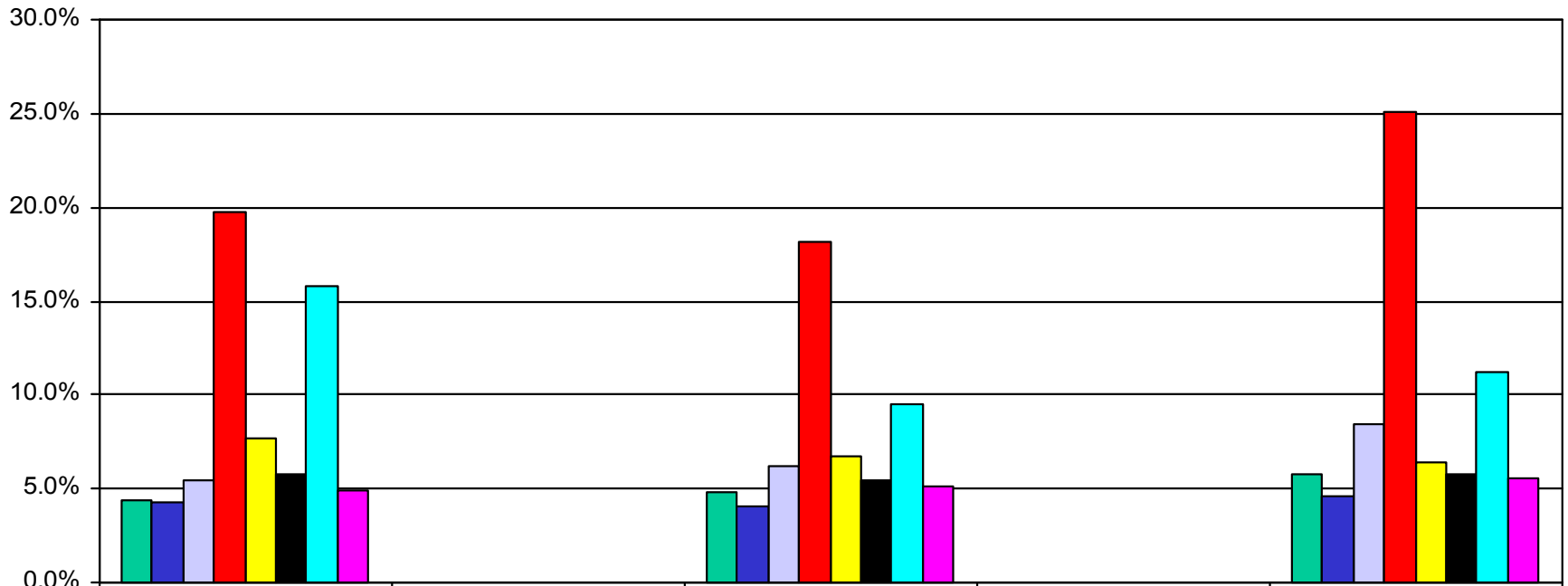
Poverty threshold for a four-person family unit is \$22,017

Poverty thresholds for one person:

- Under age 65 is \$11,201
- 65 or over is \$10,326

Percent of Population Living in Poverty

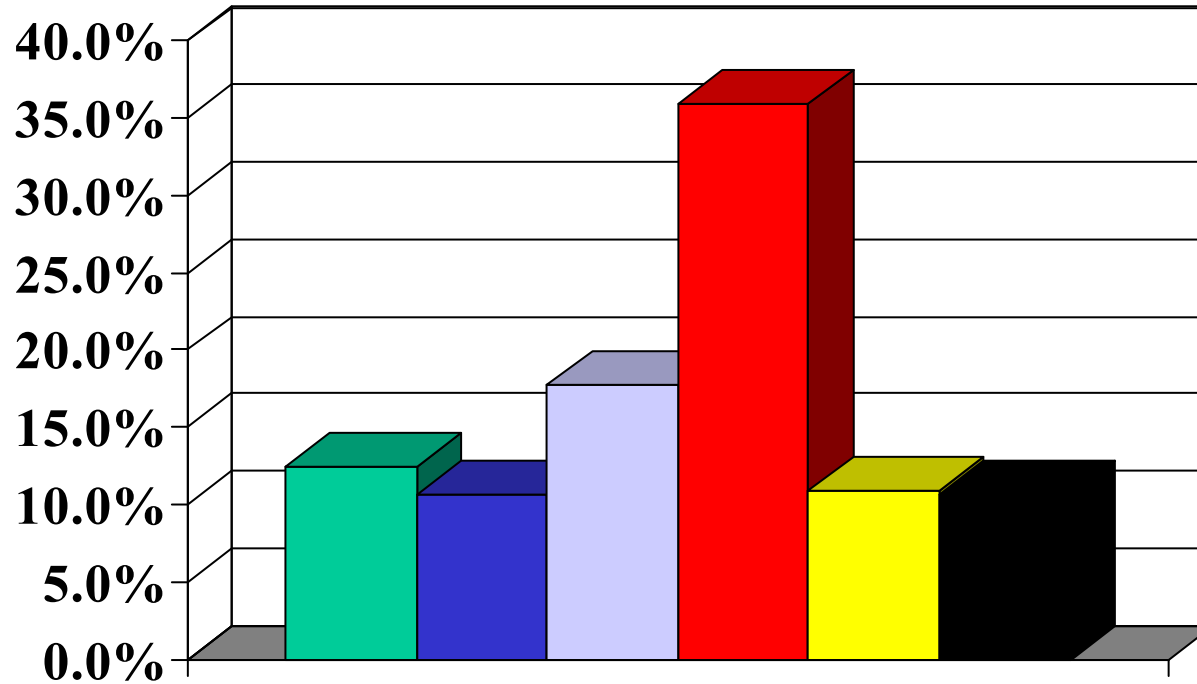
(Small Area Income and Poverty Estimates, 2008)



| | 1990 | | 2000 | | 2008 |
|---|-------|--|-------|--|-------|
| ■ Chesterfield | 4.3% | | 4.8% | | 5.8% |
| ■ Hanover | 4.3% | | 4.1% | | 4.6% |
| ■ Henrico | 5.5% | | 6.2% | | 8.4% |
| ■ Richmond | 19.8% | | 18.1% | | 25.1% |
| ■ Goochland | 7.7% | | 6.7% | | 6.4% |
| ■ Powhatan | 5.7% | | 5.4% | | 5.8% |
| ■ Charles City | 15.8% | | 9.5% | | 11.2% |
| ■ New Kent | 4.9% | | 5.1% | | 5.6% |

Family Income: \$0 - \$35,000

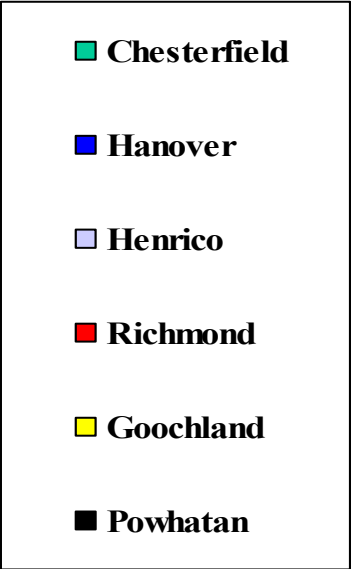
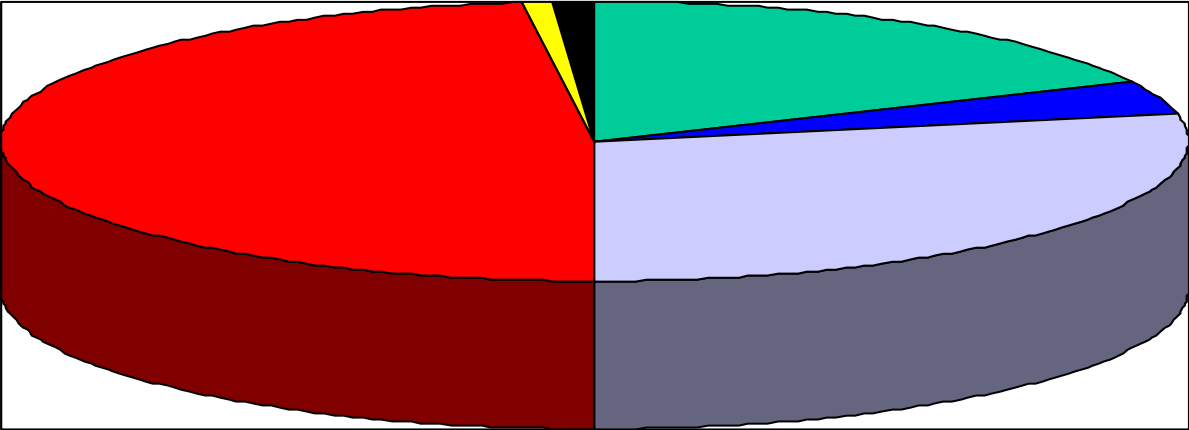
(2008 American Community Survey 1-Year Estimates for Localities Above 20,000)



| | |
|---|-------|
| ■ Chesterfield | 12.4% |
| ■ Hanover | 10.7% |
| ■ Henrico | 17.7% |
| ■ Richmond | 35.9% |
| ■ Goochland | 10.9% |
| ■ Powhatan | 10.6% |

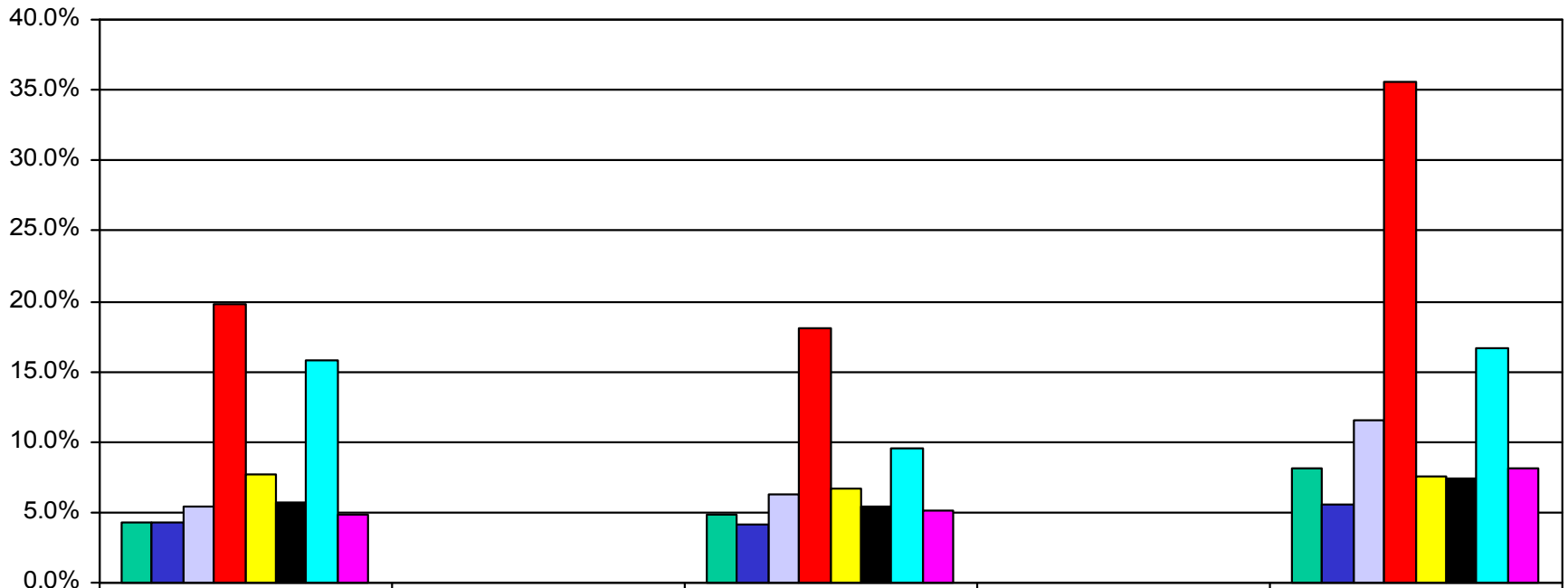
Locality Percent of Metro Poverty Population

(2008 American Community Survey 1-Year Estimates for Localities Above 20,000)



Children Under 18 Living in Poverty

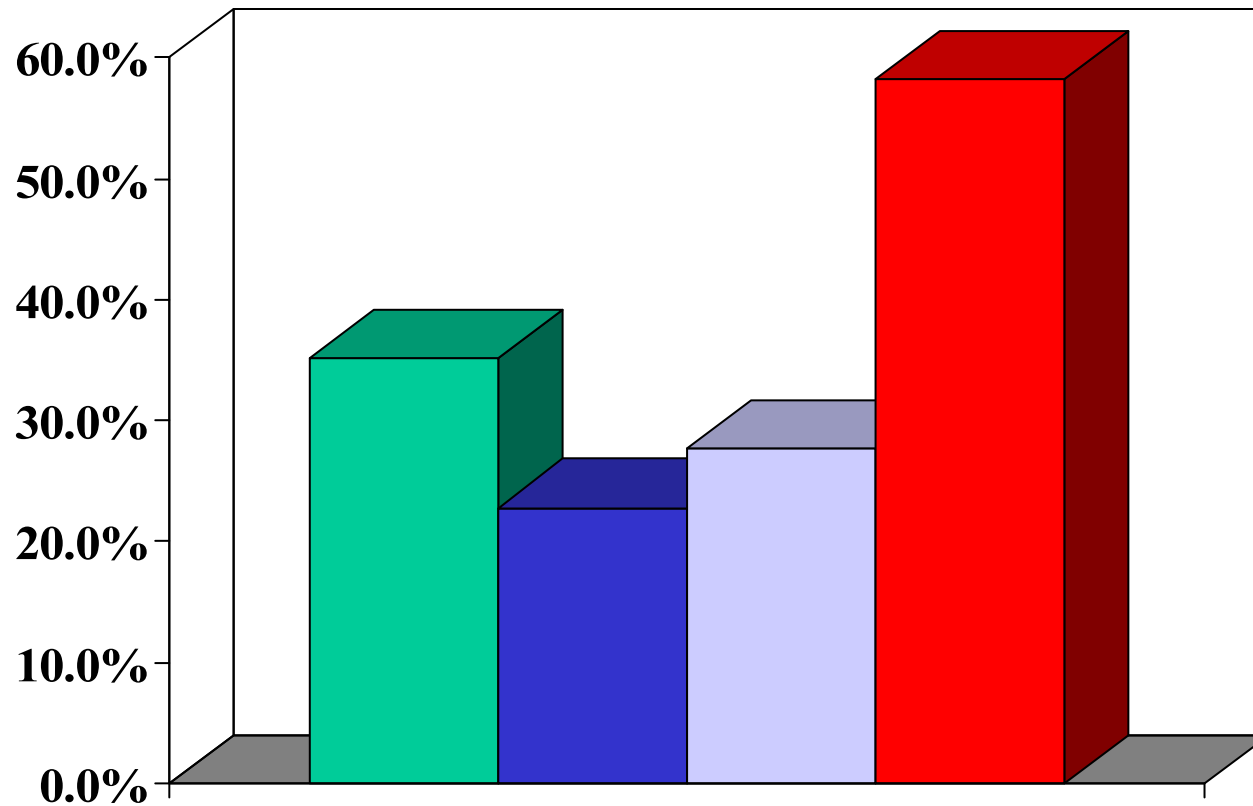
(Small Area Income and Poverty Estimates, 2008)







| | 1990 | | 2000 | | 2008 |
|---|-------|--|-------|--|-------|
| ■ Chesterfield | 4.3% | | 4.8% | | 8.1% |
| ■ Hanover | 4.3% | | 4.1% | | 5.5% |
| ■ Henrico | 5.5% | | 6.2% | | 11.5% |
| ■ Richmond | 19.8% | | 18.1% | | 35.6% |
| ■ Goochland | 7.7% | | 6.7% | | 7.5% |
| ■ Powhatan | 5.7% | | 5.4% | | 7.4% |
| ■ Charles City | 15.8% | | 9.5% | | 16.7% |
| ■ New Kent | 4.9% | | 5.1% | | 8.1% |

Percent of Female Householders with Children Under Age 5 Living in Poverty

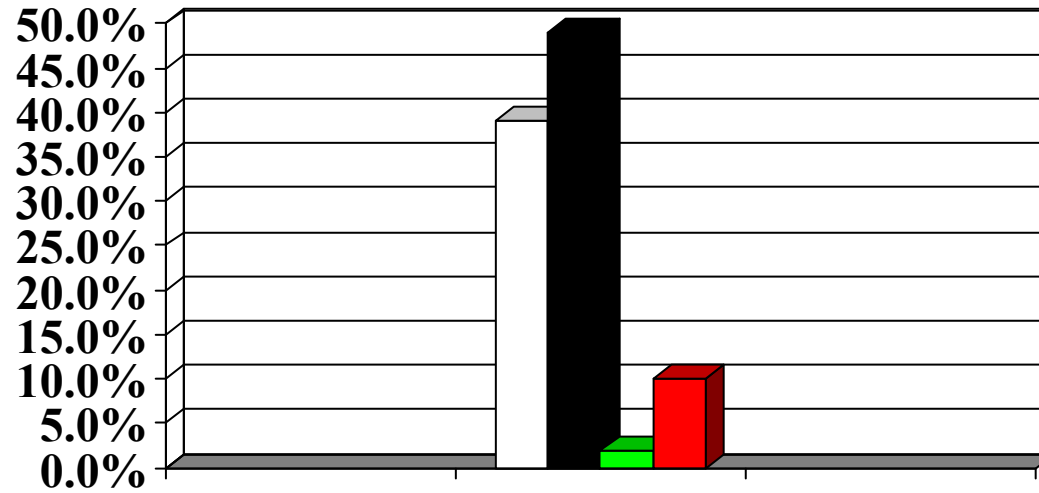
(2008 American Community Survey 1-Year Estimates for Localities Above 65,000)



| | |
|---|--------------|
|  Chesterfield | 35.1% |
|  Hanover | 22.8% |
|  Henrico | 27.7% |
|  Richmond | 58.2% |

Percent of All Poor by Race

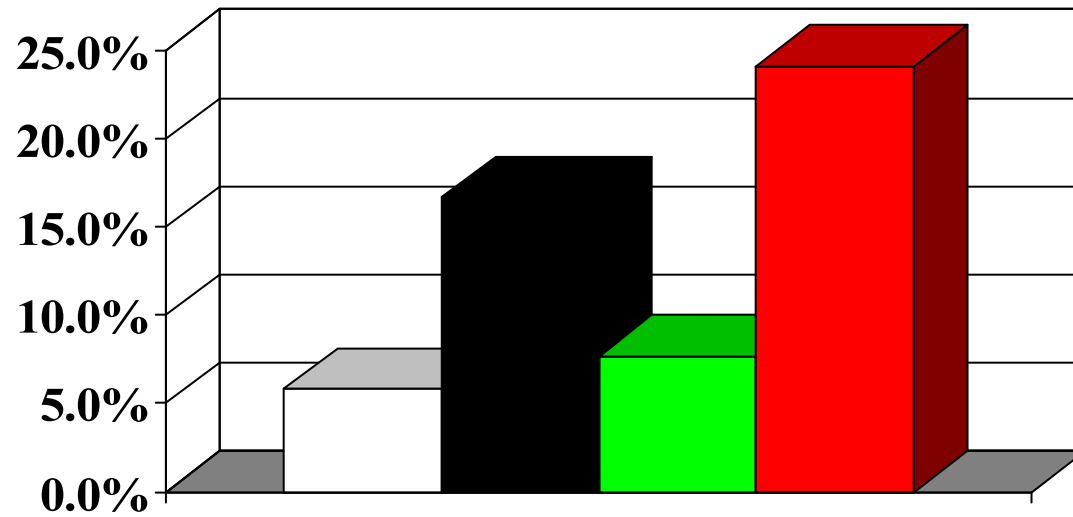
(2006-2008 American Community Survey 3-Year Estimates for Localities Above 20,000)



| | | | |
|--|--|------------|--|
| <input type="checkbox"/> White | | 39% | |
| <input checked="" type="checkbox"/> Black | | 49% | |
| <input checked="" type="checkbox"/> Asian | | 2% | |
| <input checked="" type="checkbox"/> Hispanic | | 10% | |

Percentage of Each Race in Poverty

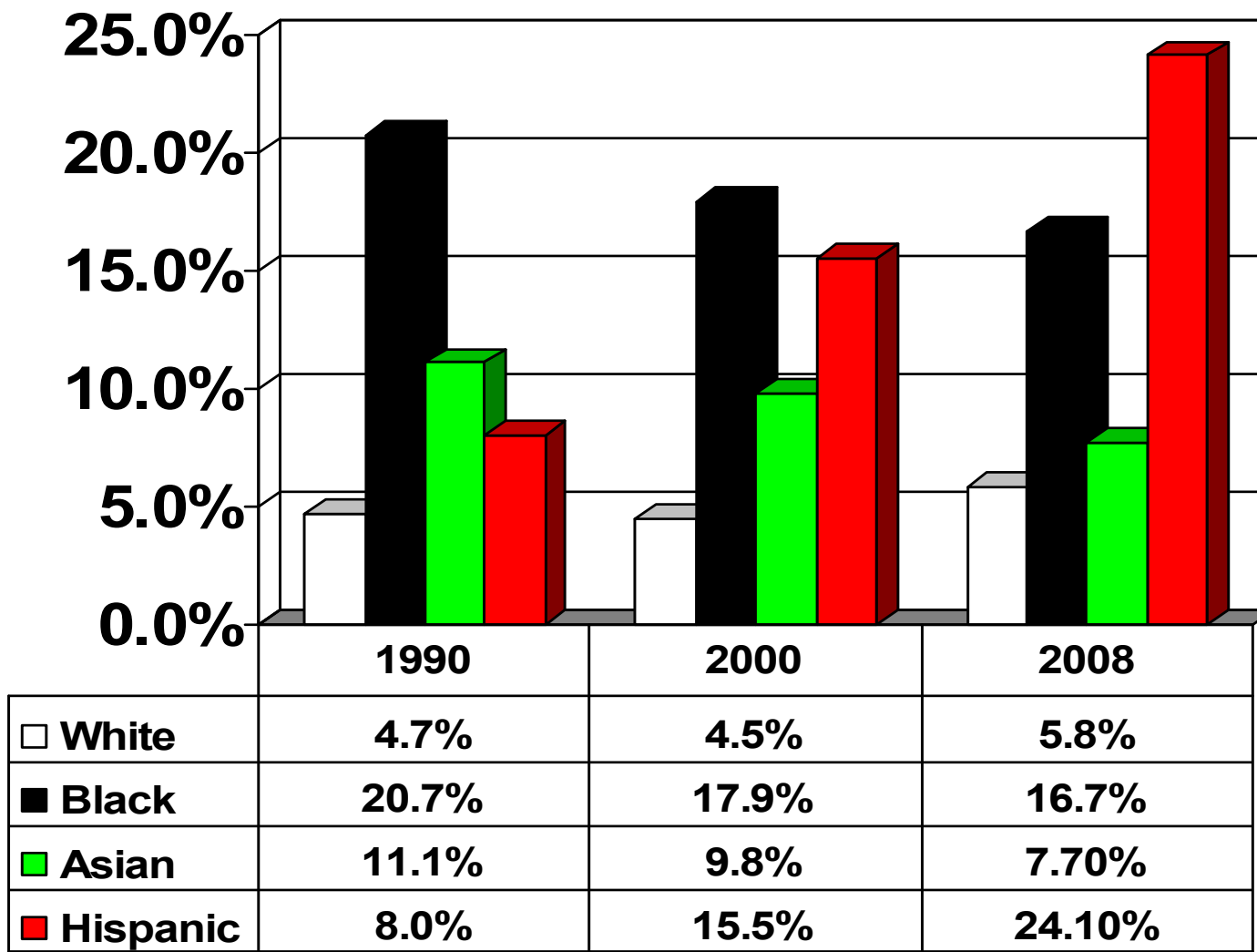
(2006-2008 American Community Survey 3-Year Estimates for Localities Above 20,000)



| | |
|--|--------|
| <input type="checkbox"/> White | 5.8% |
| <input checked="" type="checkbox"/> Black | 16.7% |
| <input checked="" type="checkbox"/> Asian | 7.70% |
| <input checked="" type="checkbox"/> Hispanic | 24.10% |

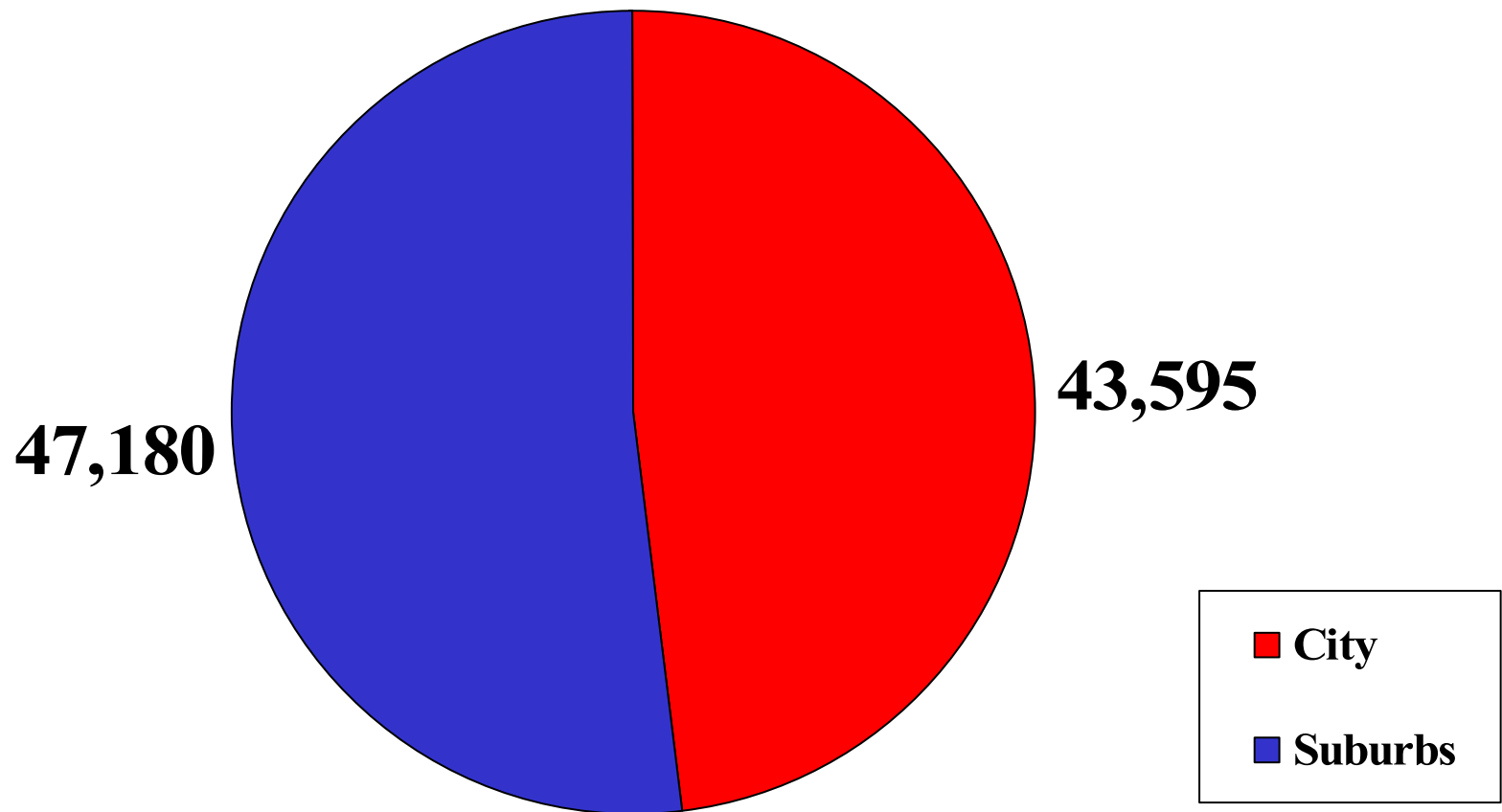
Percent of All Races Living in Poverty: 1990-2008

(2006-2008 American Community Survey 3-Year Estimates for Localities Above 20,000)



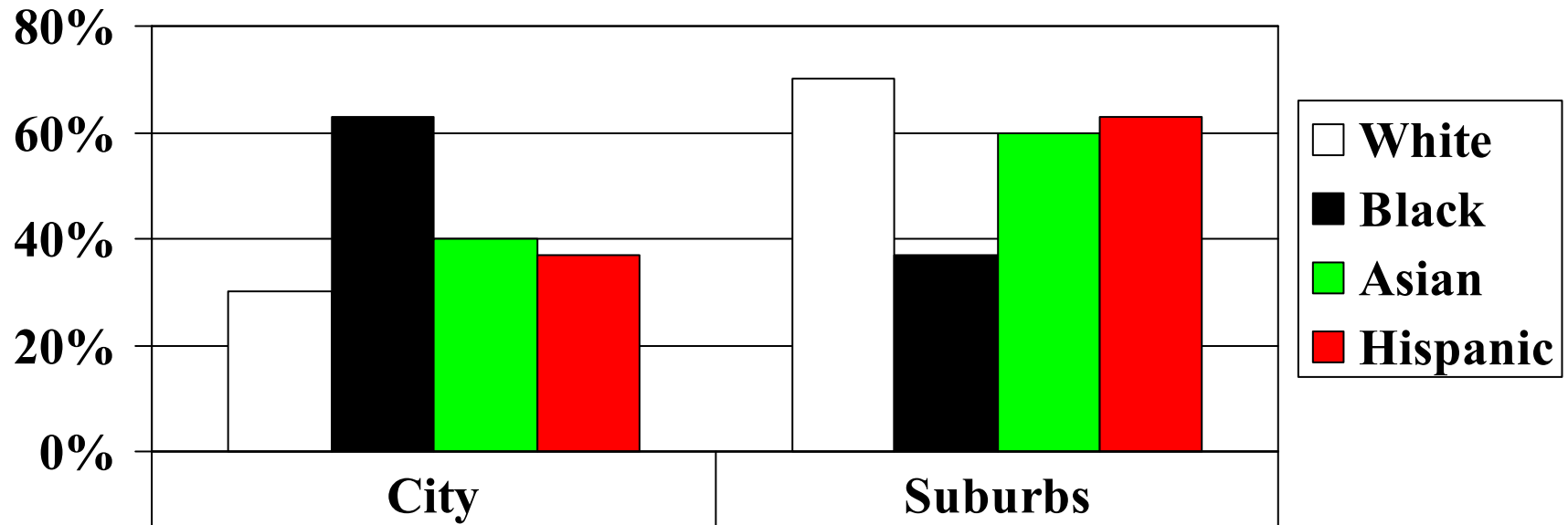
Numbers of People in Poverty

(2006-2008 American Community Survey 3-Year Estimates for Localities Above 20,000)



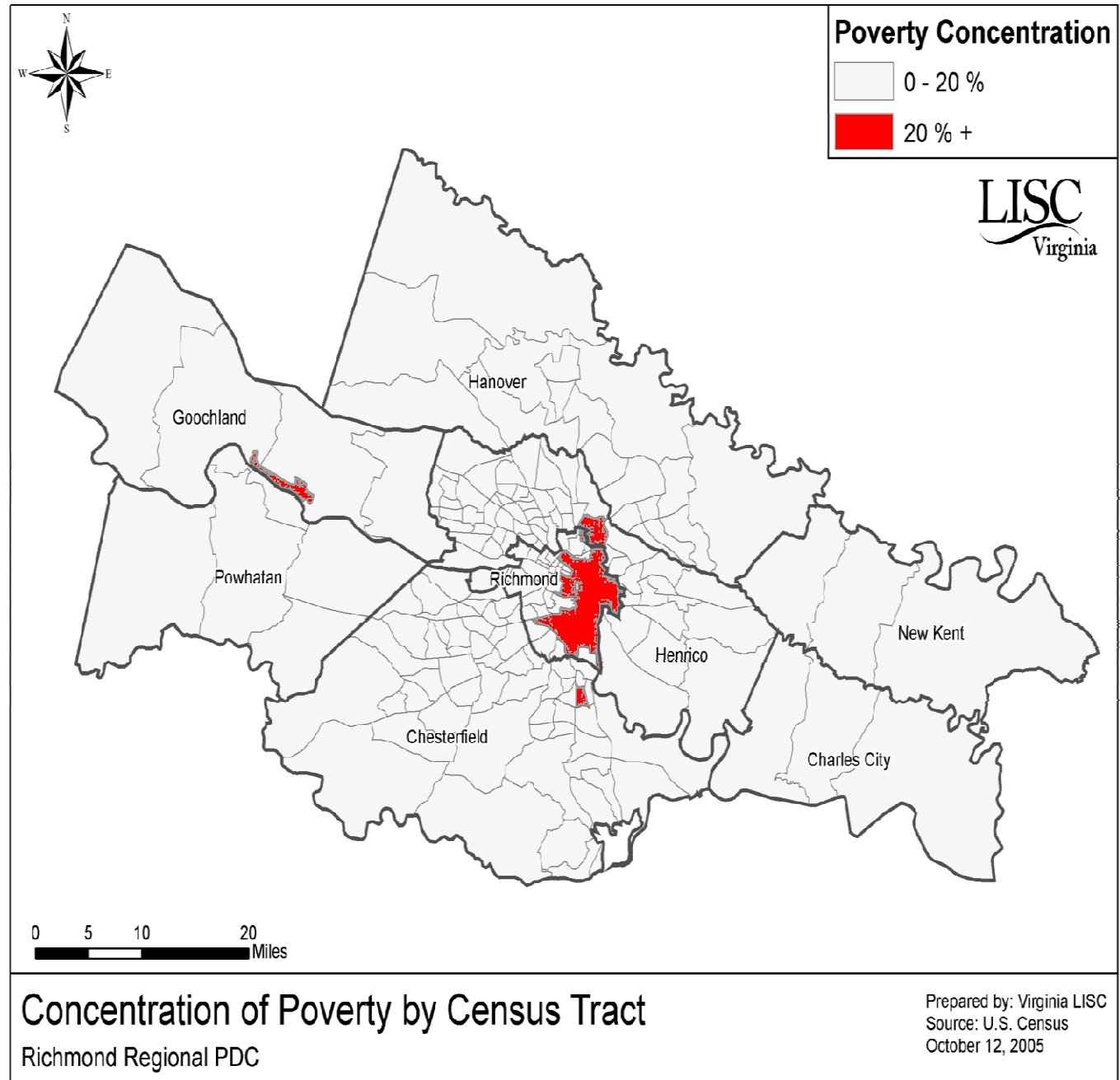
Percent of Poor by Race Living in City and Suburbs

(2006-2008 American Community 3-Year Estimates for Localities Above 20,000)



| | | |
|----------|-----|-----|
| White | 30% | 70% |
| Black | 63% | 37% |
| Asian | 40% | 60% |
| Hispanic | 37% | 63% |

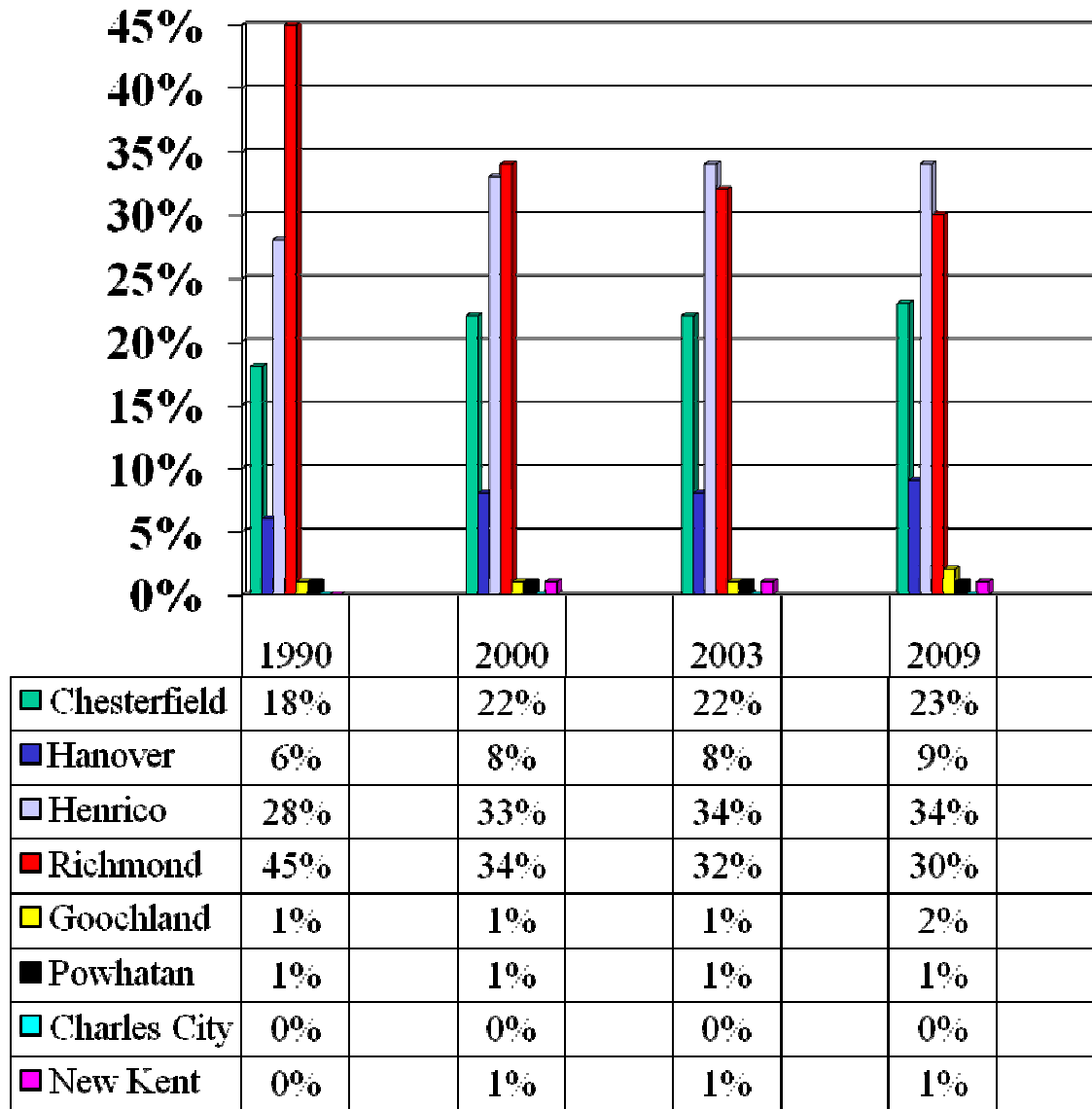
- Richmond contains the densest concentration of public housing south of NYC.
- 40% of all residents residing in East End Richmond live in poverty. 60% lack a HS diploma.
- 72% of residents in Census 301 (Gilpin Court) live in poverty



Source:
Richmond Times-Dispatch,
January 24, 2019

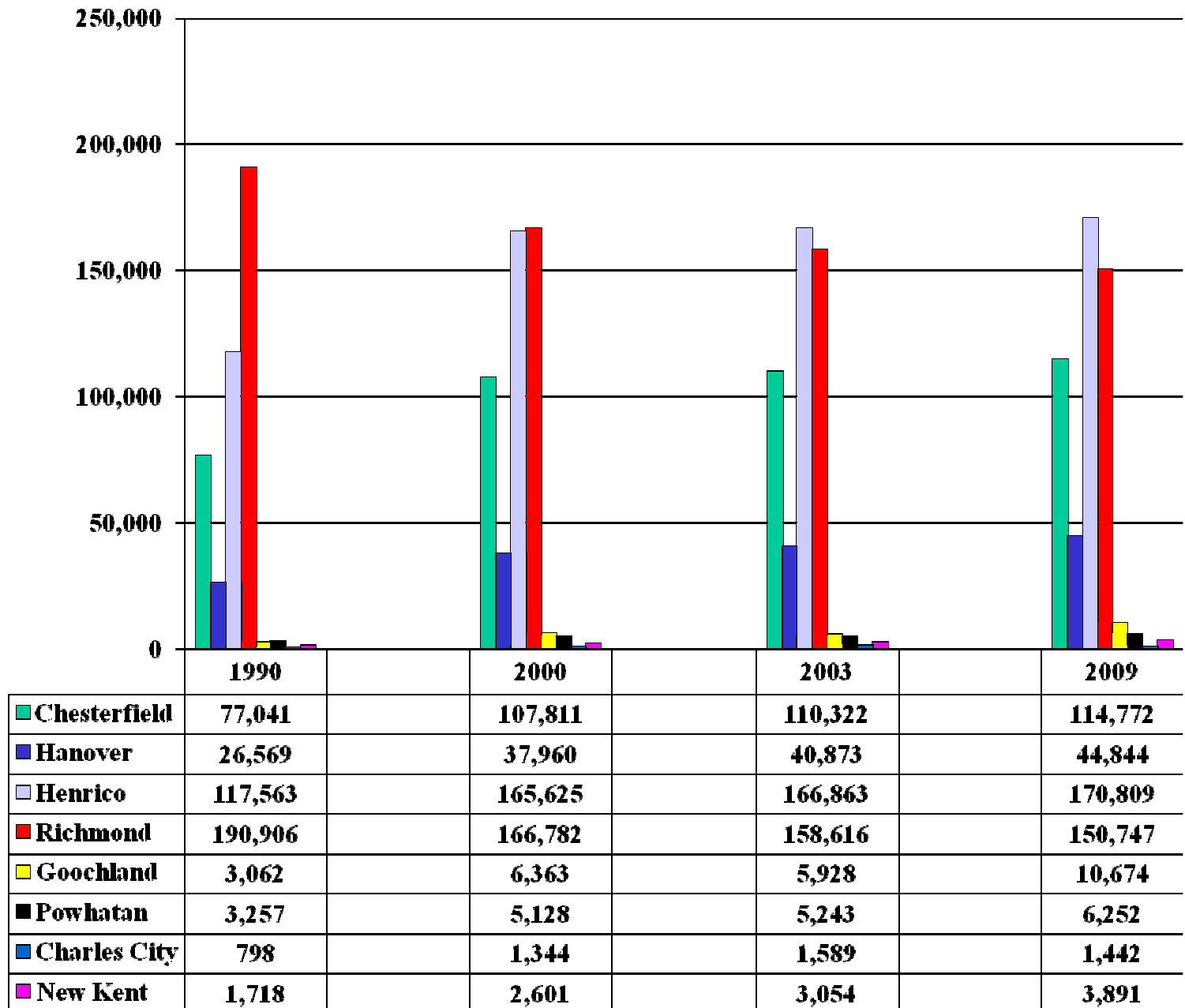
Locality Share of Total Jobs in Planning District

(Source: Virginia Employment Commission)



VEC Locality Analysis: Planning District Employment Trends: 1990-2009
 (Source: Virginia Employment Commission)

- Henrico County is the region's largest employer.
- Between 1990 and 2009, the region gained **83,517** jobs. The City lost **40,159** jobs
- Between 2003 and 2009, the region gained **10,943** jobs. The City lost **7,869** jobs.



Job Trends

Virginia Employment Commission

High Wage: \$60,000 +

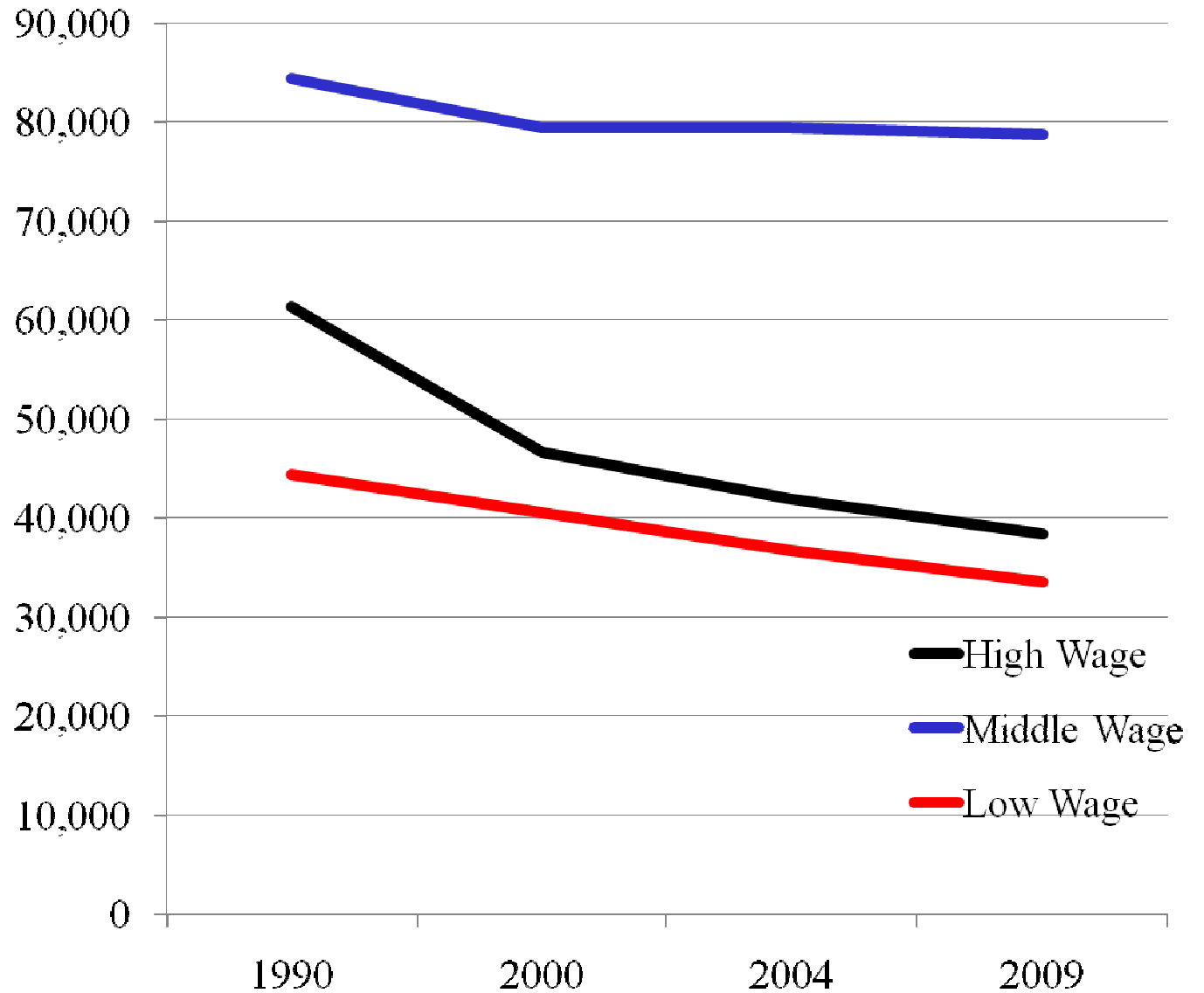
Manufacturing
Information
Finance & Insurance
Professional & Technical Services

Middle : \$35,001-59,999

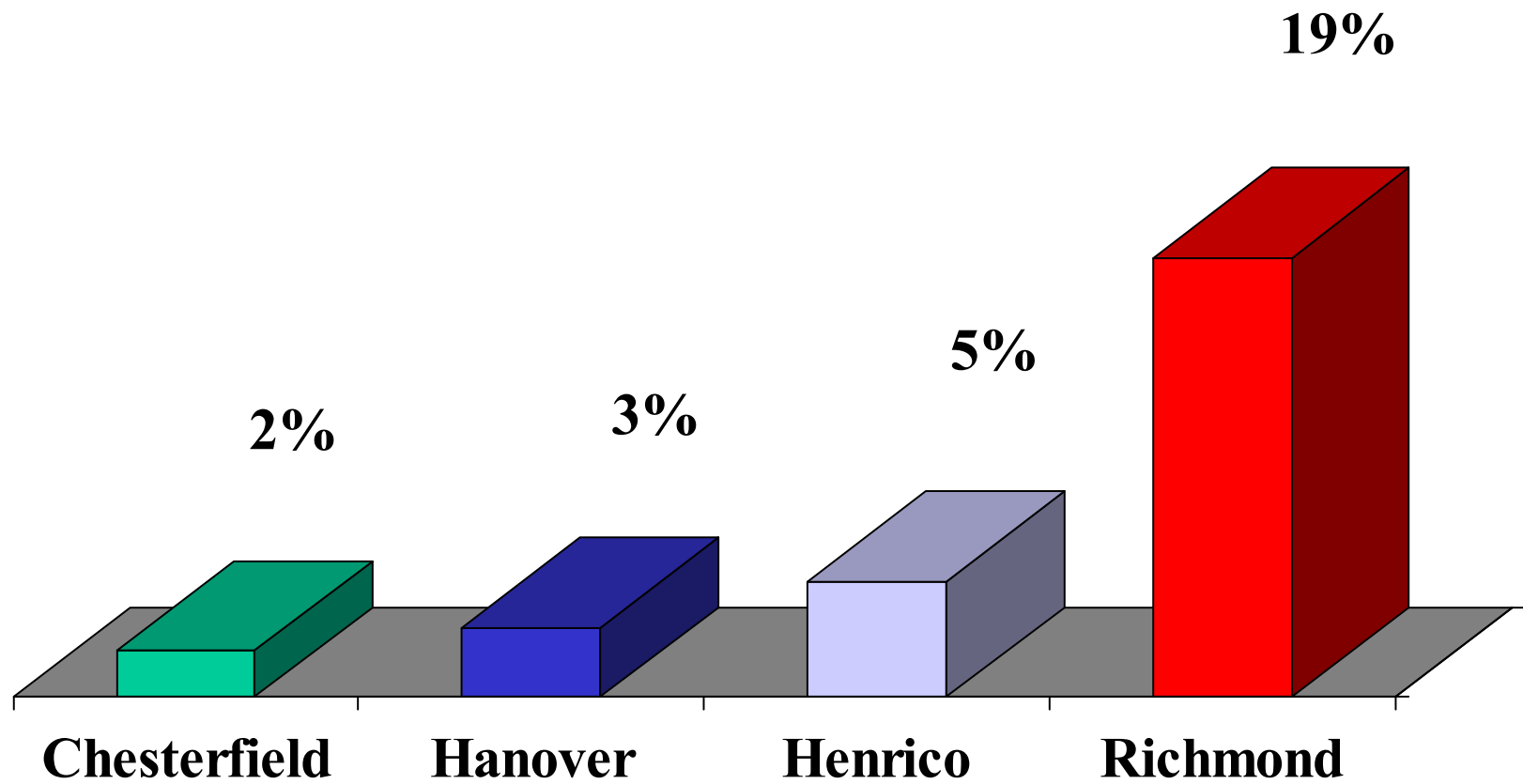
Utilities
Construction
Wholesale Trade
Transportation & Warehousing
Real Estate & Rental Leasing
Mgt of Companies
Educational Service
Health & Social Services
Public Administration

Low: \$35,000 & Below

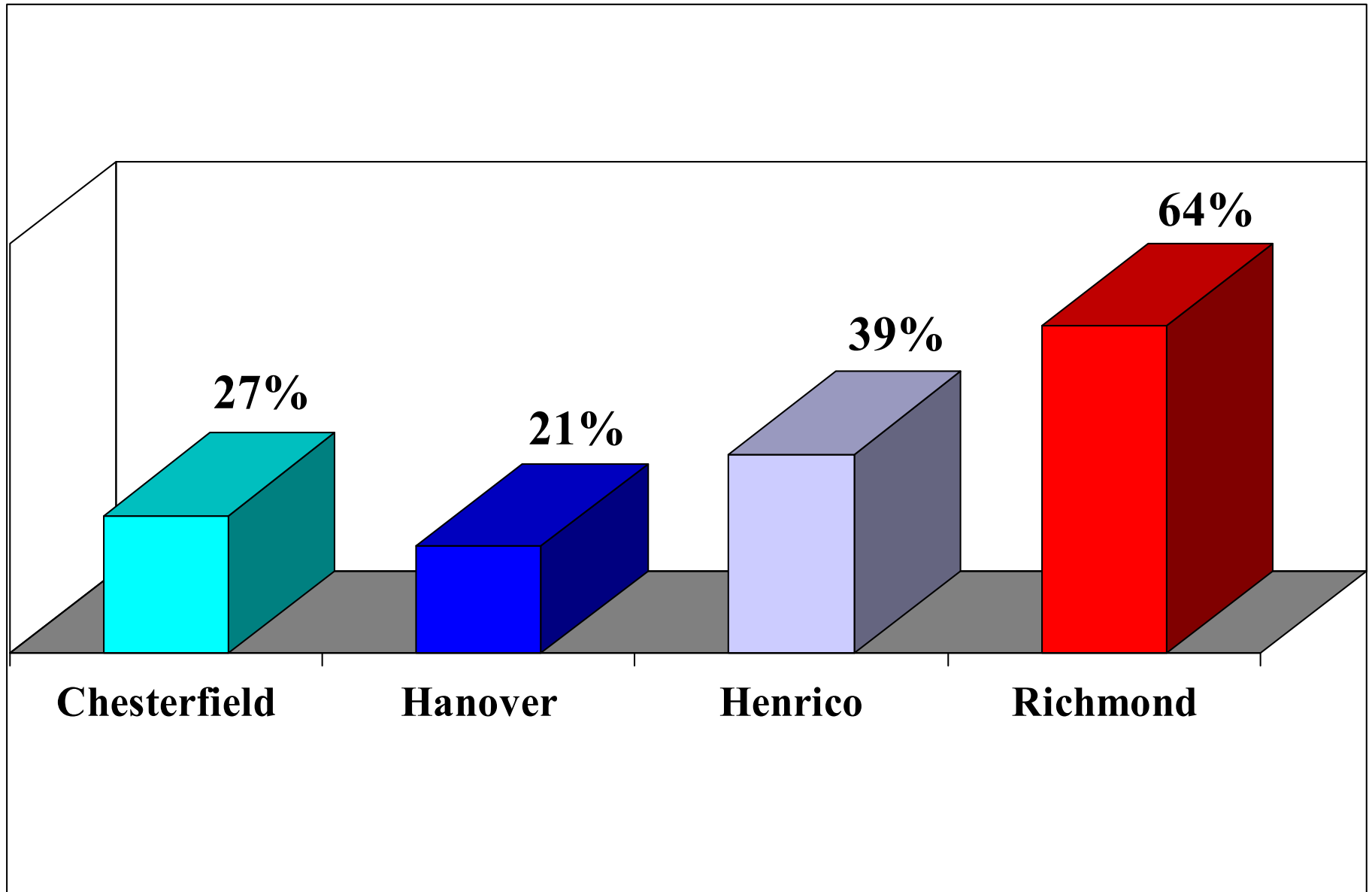
Retail Trade
Admin. & Waste Services
Arts, Entertainment, & Recreation
Accommodation & Food Services
Other Services, Ex. Pub Administration



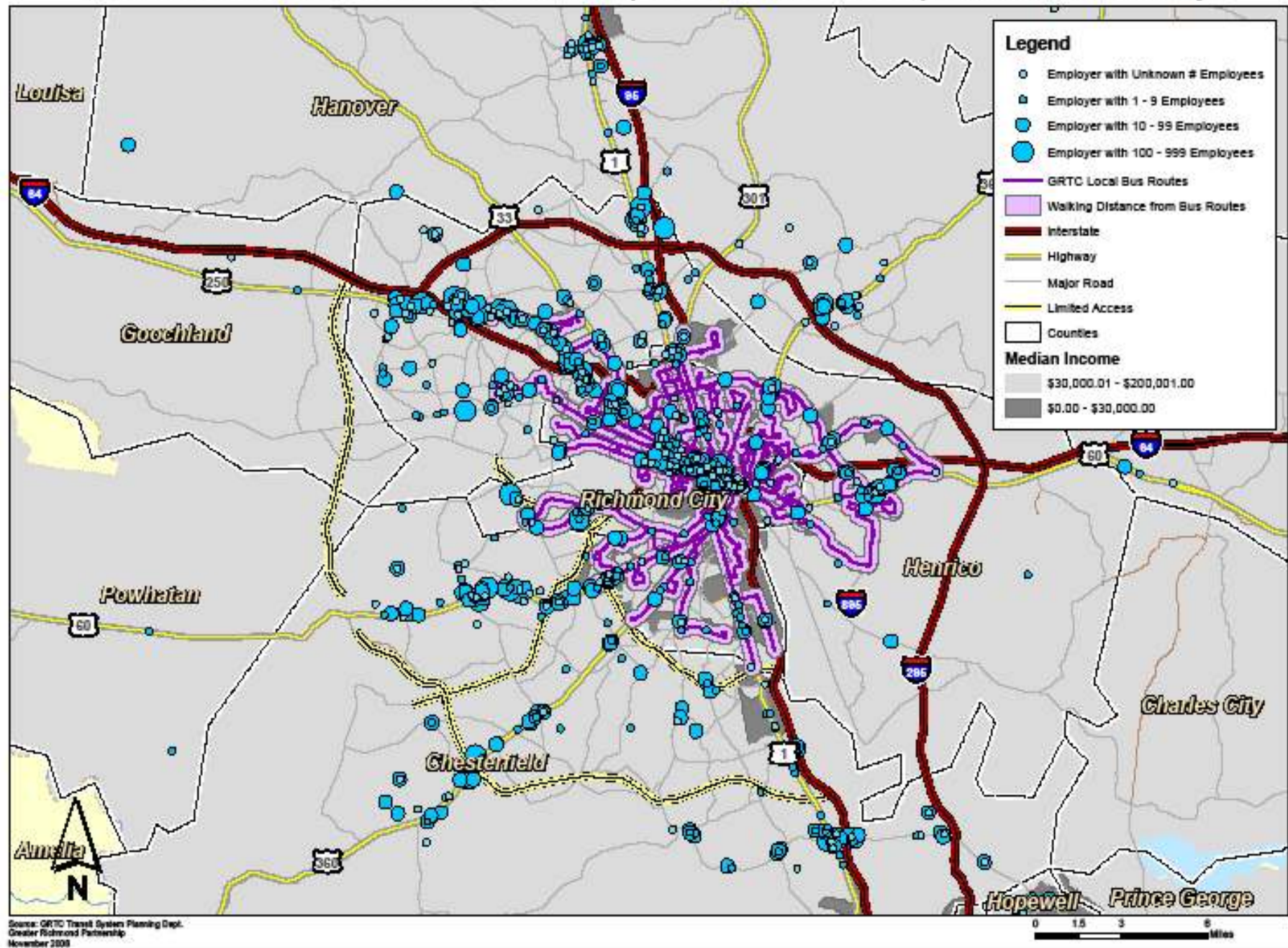
Households Without Automobiles: 2006



Households with 0-1 Car Only: 2006



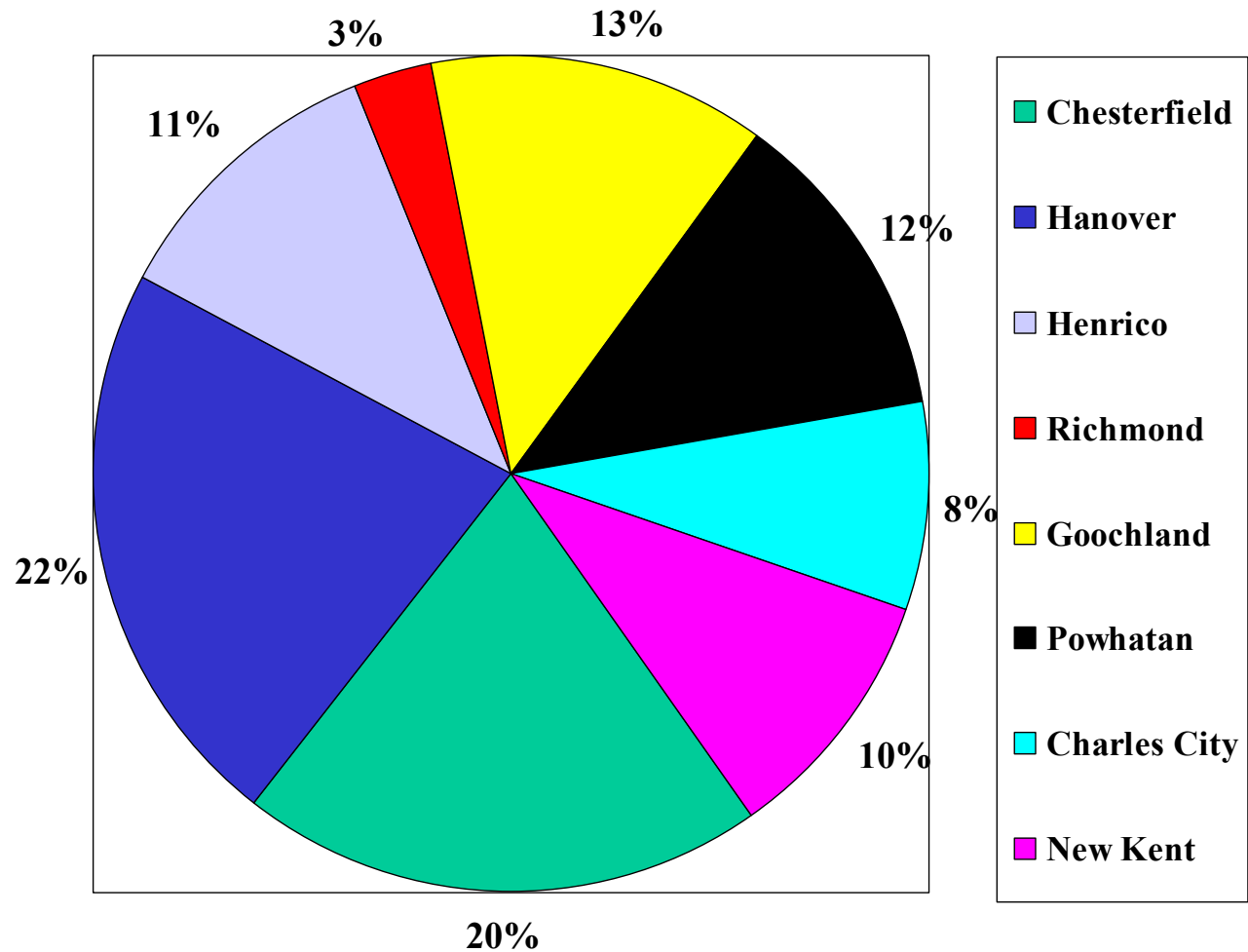
Entity Level Job Locations in the Richmond Region With Low Income Census Block Groups and Public Transportation Availability



Percent of Metropolitan Land Mass Represented by Locality

Of the 2136 square miles encompassed by the eight localities-

Chesterfield= 434 sm
Hanover= 468 sm
Henrico= 238 sm
Richmond= 60 sm
Goochland= 281 sm
Powhatan= 261 sm
Charles City=181 sm
New Kent=213 sm



2009 Report of
National Low Income Housing Coalition

- **Market rent for 2-bedroom apartment = \$925**
- **At 30% of income, income necessary to rent = \$37,000**
- **50% of all state employees in Virginia earn less than \$35,000**
- **Hourly wage needed for 2-bedroom apt. = \$17.79**
- **Average wage for renters in Richmond = \$15.07**
- **Federal minimum wage = \$7.25**

Percent of Adults Reporting Not Getting Social/Emotional Support They Need: 2010

(Centers for Disease Control & Prevention's Behavioral Risk Factor Surveillance System)

